

Contents

Introduction	3
Digital Torque Wrenches	4
IQWrench3	4
WrenchStar Multi	6
WrenchStar Multi XS	7
WrenchStar Multi Plus (Coming in 2026!)	8
WrenchStar Multi-e (Coming in 2026!)	9
Torque Wrench Heads	10
Torque Data Collectors	11
TorqueStar Series	11
IQVu-2	13
Lineside Controllers	14
TCI-2	14
Rotary Torque Transducers	15
CheckStar Multi	15
CheckStar	17
Lorenz Messtechnik GmbH	20
Joint Kits	21
Stationary Transducers	22
Static Transducers	22
Impact Tool Static Transducers	23
TS Series	24
TDC Deck Torque Calibrators	25
Torque Testers	26
ReadStar TT	26
CapStar	27
Wrenchmate	28
WM10K	28
Software	29
Curatas Wrench Control	29
OMS	30
OMS Lite	31
Readings Capture	31
Joint Simulators & Test Benches	32
Threaded Joint Rate Simulator (tJRS)	32
Mobile Torque Testing Station (MTTS)	33
Mobile Auditing Station (MAS)	34
Load Cells & Displays	35
Service, Repair & Calibration	36

Providing torque measurement and control solutions for over 50 years.

Our wide range of products and solutions cater to the needs of assembly and quality control applications in various manufacturing sectors. We help manufacturers improve product quality, safety, traceability and overall productivity.

We work alongside and partner some of the world's leading brands and manufacturers in industries such as automotive, aerospace, construction equipment, marine and offshore, power and energy, rail and general manufacturing.

Our product portfolio includes digital torque wrenches, transducers, torque data collectors and analysers, torque testers, tool auditing carts, as well as system software and operator guidance packages.

Our solutions are utilised throughout the entire assembly process, from assembly tool torque auditing and process validation, to quality verification and research and development. We help manufacturers achieve complete product traceability and confidence in every result.

To learn more about how we can support your business, please visit www.crane-electronics.com or contact your nearest Crane facility below.

Crane Electronics Ltd
Watling Drive,
Sketchley Meadows
Hinckley LE10 3EY
United Kingdom
Tel: +44 (0) 1455 25 14 88
sales@crane-electronics.com



Crane Electronics Inc
1260 11th Street West,
Milan, Illinois 61264
USA
Tel: +1 309-787-1263
salesusa@crane-electronics.com



Crane Electronics GmbH
Im Rank 5,
73655 Plüderhausen,
Germany
Tel: +49 (0)7181 9884-0
salesde@crane-electronics.com



IQWrench3 | Digital Torque Wrench

The IQWrench3 combines the precision torque and angle measurement capabilities of an advanced torque wrench, along with the storage and reliability of a robust data collector, delivering one powerful integrated solution.



Key Features

- Available in ranges from 10Nm up to 1500Nm
- Advanced software and torque measurement modes including MoveOn, Yield and Re-tighten
- Illuminated LED light for visibility in dark/confined spaces
- Colour OLED screen with simple menu system for easy navigation and viewing of results and data
- Increased internal memory for critical data storage
- Interchangeable adapter heads and 'Auto-ID' for auto length compensation and multiple job use
- Optional 1D & 2D barcode reader for simple 'Jobs' and 'Round' selection or identifying Part/VIN numbers
- FOD (Foreign Object Debris) Compliant for use in the Aerospace & Automotive industries
- Point-of-load 'insensitive' - no incorrect hand position; torque can be applied from any position on the wrench

What's Included?

- Battery
- Power Supply
- Charging Cradle
- Quick Start Guide
- Calibration Certificate
- USB - PC Cable
- Supplied Wrench Head;
 - 10 Nm DIN 9mm x 12mm
 - 25, 75, 120 Nm DIN 9mm x 12mm
 - 180 Nm DIN 14mm x 18mm
 - 340, 600 Nm DIN 14mm x 18mm
 - 750, 1000, 1500 Nm Fixed



Product Codes	Accessories
IQW3A-0000-CRUXXB	IQWrench3 Barcode (upgrade)
IQW3A-0000-CRCCXX	IQWrench3 Basic Comms & Charging Cradle
IQW3A-0000-CRCRPX	IQWrench3 Cradle RS232 + PSU
IQW3A-0000-CRBXXX	IQWrench3 Battery
IQW3A-0000-CRCNBC	IQWrench3 Desktop Battery Charger

Product Codes	IQWrench3 with Angle
IQW3A-0010-CRDARX	10Nm IQWrench3 Advanced Angle with DIN head and cradle
IQW3A-0025-CRDARX	25Nm IQWrench3 Advanced Angle with DIN head and cradle
IQW3A-0075-CRDARX	75Nm IQWrench3 Advanced Angle with DIN head and cradle
IQW3A-0120-CRDARX	120Nm IQWrench3 Advanced Angle with DIN head and cradle
IQW3A-0180-CRDARX	180Nm IQWrench3 Advanced Angle with DIN head and cradle
IQW3A-0250-CRDARX	250Nm IQWrench3 Advanced Angle with DIN head and cradle
IQW3A-0340-CRDARX	340Nm IQWrench3 Advanced Angle with DIN head and cradle
IQW3A-0600-CRDARX	600Nm IQWrench3 Advanced Angle with DIN head and cradle
IQW3A-0750-CRFARX	750Nm IQWrench3 Advanced Angle with 3/4" Fixed head and cradle
IQW3A-1000-CRFARX	1000Nm IQWrench3 Advanced Angle with 1" Fixed head and cradle
IQW3A-1500-CRFARX	1500Nm IQWrench3 1500Nm Advanced Angle With 1" Fixed Head



Product Codes	IQWrench3 with Angle & Barcode
IQW3A-0010-CRDARB	10Nm IQWrench3 Advanced Angle with DIN head, cradle and barcode
IQW3A-0025-CRDARB	25Nm IQWrench3 Advanced Angle with DIN head, cradle and barcode
IQW3A-0075-CRDARB	75Nm IQWrench3 Advanced Angle with DIN head, cradle and barcode
IQW3A-0120-CRDARB	120Nm IQWrench3 Advanced Angle with DIN head, cradle and barcode
IQW3A-0180-CRDARB	180Nm IQWrench3 Advanced Angle with DIN head, cradle and barcode
IQW3A-0250-CRDARB	250Nm IQWrench3 Advanced Angle with DIN head, cradle and barcode
IQW3A-0340-CRDARB	340Nm IQWrench3 Advanced Angle with DIN head, cradle and barcode
IQW3A-0600-CRDARB	600Nm IQWrench3 Advanced Angle with DIN head, cradle and barcode
IQW3A-0750-CRFARB	750Nm IQWrench3 Advanced Angle with 3/4" Fixed head, cradle and barcode
IQW3A-1000-CRFARB	1000Nm IQWrench3 Advanced Angle with 1" Fixed head, cradle and barcode
IQW3A-1500-CRFARB	1500Nm IQWrench3 Advanced Angle with 1" Fixed head, cradle and barcode

WrenchStar Multi | Digital Torque Wrench

The WrenchStar Multi digital torque wrench is perfect for users who require torque and angle data digitally recording and a reliable, versatile and robust torque wrench. The WrenchStar Multi works in combination with our TorqueStar Pro and TCI-2.



Key Features

- Available in ranges from 10Nm up to 1500Nm
- 360° light-ring for colour status of the readings
- Vibration and buzzer alert for additional status feedback
- Quick change battery system for extended shift use
- Interchangeable torque wrench heads for multiple job use plus Auto-ID wrench heads for automatic length compensation
- Small, clear OLED display screen
- Records up to 200 readings offline / out of range
- Compatible with TorqueStar Plus/Pro and IQVu-2 data collectors for quality auditing
- Compatible with TCI lineside controllers for assembly and production
- FOD (Foreign Object Debris) Compliant for use in the Aerospace & Automotive industries
- Point-of-load 'insensitive' – no incorrect hand position; torque can be applied from any position on the handle of the wrench



What's Included?

- Battery
- Power Supply
- Charging Cradle
- Quick Start Guide
- Calibration Certificate

Product Codes	Accessories
WS1XS-0006-CRDCDX	WrenchStar Multi - Cable to Data Collector
WS1XS-0000-CRCNBX	WrenchStar Multi - Spare Battery
WS1XS-0000-CRCNXX	WrenchStar Multi - Cradle to Charge Wrench (no comms)
WS1XS-0000-CRCNBC	WrenchStar Multi - Desktop Battery Charger
WS1XS-0000-C1CNBB	WrenchStar Multi - Spare Battery And Desktop Battery Charger
WS1XS-0000-CRPSUX	WrenchStar Multi - Power Supply

Product Codes	WrenchStar Multi
WS1JX-0010-C1DARX	10Nm WrenchStar Multi RF with DIN head, battery pack and cradle
WS1JX-0025-C1DARX	25Nm WrenchStar Multi RF with DIN head, battery pack and cradle
WS1JX-0075-C1DARX	75Nm WrenchStar Multi RF with DIN head, battery pack and cradle
WS1JX-0120-C1DARX	120Nm WrenchStar Multi RF with DIN head, battery pack and cradle
WS1KX-0180-C1DARX	180Nm WrenchStar Multi RF with DIN head, battery pack and cradle
WS1KX-0250-C1DARX	250Nm WrenchStar Multi RF with DIN head, battery pack and cradle
WS1KX-0340-C1DARX	340Nm WrenchStar Multi RF with DIN head, battery pack and cradle
WS1KX-0500-C1DARX	500Nm WrenchStar Multi RF with DIN head, battery pack and cradle
WS1DX-0750-C1FARX	750Nm WrenchStar Multi RF with Fixed head, battery pack and cradle
WS1FX-1000-C1FARX	1000Nm WrenchStar Multi RF with Fixed head, battery pack and cradle
WS1FX-1500-C1FARX	1500Nm WrenchStar Multi RF with Fixed head, battery pack and cradle



WrenchStar Multi XS | Digital Torque Wrench

The WrenchStar Multi XS digital torque wrench is ideal for tightening applications in confined or enclosed spaces, where access with a standard sized torque wrench is not possible or problematic. The shorter version of the established WrenchStar Multi has all of the same expected performance and features as the standard version.



Key Features

- Shortened-length wrench for tightening and auditing torque and angle in enclosed or confined spaces
- Transducerised 'neck' with zero shaft
- All of the expected features and benefits of the established WrenchStar Multi torque series
- Available in 10, 25 and 50 Nm versions

Product Codes	WrenchStar Multi XS
WS1JU-0010-C1DARX	10Nm WrenchStar Multi (short shaft), RF, with DIN head, battery pack and cradle.
WS1JU-0025-C1DARX	25Nm WrenchStar Multi (short shaft), RF, with DIN head, battery pack and cradle
WS1JU-0050-C1DARX	50Nm WrenchStar Multi (short shaft), RF, with DIN head, battery pack and cradle

WrenchStar Multi Plus | Digital Torque Wrench

COMING IN 2026! The new WrenchStar Multi Plus is coming in 2026. The new model offers an upgraded version of our innovative wrench, adding water and oil ingress protection, enhanced drop proofing and improved connectivity options via Bluetooth, RF and Wi-Fi.



Key Features

- Available in ranges from 10Nm up to 650Nm
- 360° light-ring for colour status of the readings
- Vibration and buzzer alert for additional status feedback
- Quick change battery system for extended shift use
- Interchangeable torque wrench heads for multiple job use plus Auto-ID wrench heads for automatic length compensation
- Records up to 200 readings offline / out of range
- IP Rating 55 - Water, Dust and Oil Ingress Protection
- Wi-Fi 6 802.11ax (2.4/5Ghz) with PSK and EAP-TLS
- Bluetooth 5.3 BLE communication with handheld devices
- Drop-tested to 2.3m

Product Codes	Bluetooth - WSM Plus
WS1JO-0010-C1DABX	10Nm WrenchStar Multi PLUS Bluetooth with DIN Head, battery pack and cradle
WS1JO-0025-C1DABX	25Nm WrenchStar Multi PLUS Bluetooth with DIN Head, battery pack and cradle
WS1JO-0075-C1DABX	75Nm WrenchStar Multi PLUS Bluetooth with DIN Head, battery pack and cradle
WS1JO-0120-C1DABX	120Nm WrenchStar Multi PLUS Bluetooth with DIN Head, battery pack and cradle
WS1KO-0180-C1DABX	180Nm WrenchStar Multi PLUS Bluetooth with DIN Head, battery pack and cradle
WS1KO-0250-C1DABX	250Nm WrenchStar Multi PLUS Bluetooth with DIN head, battery pack, and cradle
WS1KO-0340-C1DABX	340Nm WrenchStar Multi PLUS Bluetooth with DIN Head, battery pack and cradle
WS1KO-0500-C1DABX	500Nm WrenchStar Multi PLUS Bluetooth with DIN Head, battery pack and cradle
WS1KO-0650-C1DABX	650Nm WrenchStar Multi PLUS Bluetooth with DIN Head, battery pack and cradle

Product Codes	Wi-Fi - WSM Plus
WS1JO-0010-C1DAWX	10Nm WrenchStar Multi PLUS Wi-Fi with DIN Head, battery pack and cradle
WS1JO-0025-C1DAWX	25Nm WrenchStar Multi PLUS Wi-Fi with DIN Head, battery pack and cradle
WS1JO-0075-C1DAWX	75Nm WrenchStar Multi PLUS Wi-Fi with DIN Head, battery pack and cradle
WS1JO-0120-C1DAWX	120Nm WrenchStar Multi PLUS Wi-Fi with DIN Head, battery pack and cradle
WS1KO-0180-C1DAWX	180Nm WrenchStar Multi PLUS Wi-Fi with DIN Head, battery pack and cradle
WS1KO-0250-C1DAWX	250Nm WrenchStar Multi PLUS Wi-Fi with DIN Head, battery pack and cradle
WS1KO-0340-C1DAWX	340Nm WrenchStar Multi PLUS Wi-Fi with DIN Head, battery pack and cradle
WS1KO-0500-C1DAWX	500Nm WrenchStar Multi PLUS Wi-Fi with DIN Head, battery pack and cradle
WS1KO-0650-C1DAWX	650Nm WrenchStar Multi PLUS Wi-Fi with DIN Head, battery pack and cradle

Product Codes	RF - WSM Plus
WS1JO-0010-C1DARX	10Nm WrenchStar Multi PLUS RF with DIN Head, battery pack and cradle
WS1JO-0025-C1DARX	25Nm WrenchStar Multi PLUS RF with DIN Head, battery pack and cradle
WS1JO-0075-C1DARX	75Nm WrenchStar Multi PLUS RF with DIN Head, battery pack and cradle
WS1JO-0120-C1DARX	120Nm WrenchStar Multi PLUS RF with DIN Head, battery pack and cradle
WS1KO-0180-C1DARX	180Nm WrenchStar Multi PLUS RF with DIN Head, battery pack and cradle
WS1KO-0250-C1DARX	250Nm WrenchStar Multi PLUS RF with DIN Head, battery pack and cradle
WS1KO-0340-C1DARX	340Nm WrenchStar Multi PLUS RF with DIN Head, battery pack and cradle
WS1KO-0500-C1DARX	500Nm WrenchStar Multi PLUS RF with DIN Head, battery pack and cradle
WS1KO-0650-C1DARX	650Nm WrenchStar Multi PLUS RF with DIN Head, battery pack and cradle

PLEASE NOTE. the WrenchStar Multi Plus is currently unavailable.
This product will be launching in 2026, adding a new model to the WrenchStar Multi family. Contact us for more information.

WrenchStar Multi-e | Digital Torque Wrench

COMING IN 2026! Exciting changes are underway for the WrenchStar Multi-e. A new and enhanced next-generation model of our insulated torque wrench will be available in 2026. The new and improved wrench will offer an even greater level of confidence for electrically 'live' applications.



Key Features

- The WrenchStar Multi-e is designed for use in EV and Battery environments, with user safety in mind
- Includes all of the innovative features and capabilities of the existing WrenchStar Multi digital torque wrench
- Fully insulated wrench design with non-conductive insulation and isolated metal components, making it completely resistant to potentially dangerous electrical conductivity
- Inductive battery charging system, complying to WPC/Qi standards, for safer and efficient charging of the wrench

What's Included?

- Battery
- Inductive Charging Cradle
- Power Supply
- Insulated Ratchet Adapter Wrench Head;
- Quick Start Guide
- Calibration Certificate

Product Codes	WrenchStar Multi-e
WS1JE-0010-C1DARX	10Nm EV WrenchStar Multi with DIN head, battery pack, and cradle
WS1JE-0025-C1DARX	25Nm EV WrenchStar Multi with DIN head, battery pack, and cradle
WS1JE-0050-C1DARX	50Nm EV WrenchStar Multi with DIN head, battery pack, and cradle
WS1JE-0075-C1DARX	75Nm EV WrenchStar Multi with DIN head, battery pack, and cradle
WS1JE-0100-C1DARX	100Nm EV WrenchStar Multi with DIN head, battery pack, and cradle

PLEASE NOTE. the WrenchStar Multi-e is currently unavailable.
This product will be relaunching in 2026 with a new and improved design and functionality. Contact us for more information.

Torque Wrench Heads | Accessories

We offer a series of different interchangeable torque wrench heads to suit our range of digital torque wrenches. The wrench head adapters are ideal for applications that require quick, efficient and repetitive head changes for wrench operation.



Key Features

- Multiple sizes and head fittings available including fixed, DIN, ratchet, ring, torx and open end
- Optional auto ID chip available for automatic wrench recognition of the sizing and type of head making it easy to quickly use the tool for the job
- Auto ID also allows the wrench to automatically adjust its torque readings for the specific size and length of the attached wrench head, making it quick and easy to swap between jobs with a single wrench
- Optimized for the IQWrench and WrenchStar Multi series

Product Codes	DIN Head
SPAIX-01/4-CRXXXX	1/4" Square Drive 9x12 DIN Head
SPAIX-03/8-CRXXXX	3/8" Square Drive 9x12 DIN Head
SPAIX-1/2-CRXXXX	1/2" Square Drive 9x12 DIN Head
SPAKX-01/2-CRXXXX	1/2" Square Drive 14x18 DIN Head
SPAKX-3/4-CRXXXX	3/4" Square Drive 14x18 DIN Head

Product Codes	Ratchet Head
1407449	1/4" Square Drive Ratchet Head 9x12 DIN Head (40Nm MAX)
140725	3/8" Square Drive Ratchet Head 9x12 DIN Head (100Nm MAX)
1407450	1/2" Square Drive Ratchet Head 9x12 DIN Head (100Nm MAX)
140727	1/2" Square Drive Ratchet Head 14x18 DIN Head (300Nm MAX)
1404917	3/4" Square Drive Ratchet Head 14x18 DIN (400Nm MAX)
1407451	3/4" Square Drive Ratchet Head 14x18 DIN (650Nm MAX)

Product Codes	Auto-ID Chip
IQH1W-0000-CRHPCB	IQWrench Auto ID - Fitted
WSH1W-0000-CRHPCB	WrenchStar Multi Auto ID- Fitted

Other heads available on request:



Bit Holder

Quick Release Ratchet

Ring

Torx

Open Ring

Open End

TorqueStar Series | Torque Data Collectors

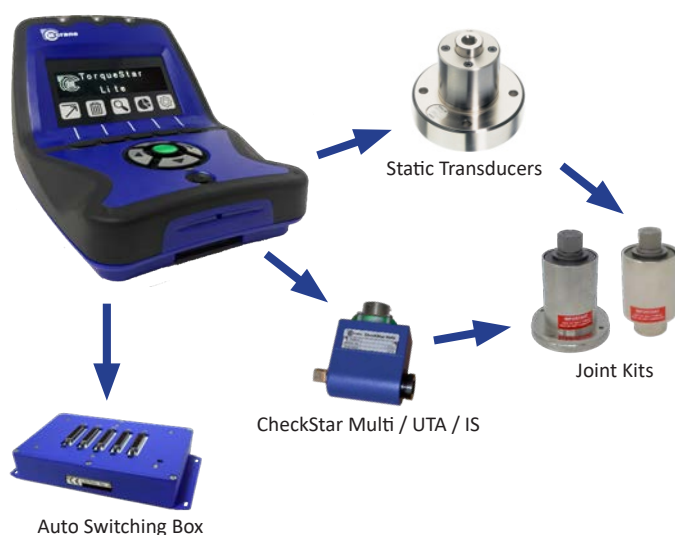
An innovative series of torque data collectors ranging from the TorqueStar Lite, a basic data collector and indicator, up to the TorqueStar Plus, with full-colour screen, and the TorqueStar Pro, with 'jobs & rounds', advanced statistics and torque traces.



Key Features

- Simple readout (Lite) to comprehensive audit tools (Plus/Pro)
- Display of all torque data and curves (Plus/Pro)
- Auto Bi-directional torque, angle and impulse count
- Track, Peak, Click and Pulse measurement as standard with Force, Audit (Plus) and MoveOn, Yield and Retighten (Pro)
- User selectable frequency response
- Upper, lower and target specification limits for torque and angle
- Automatic transducer recognition
- Simple and easy to use OLED screen (Lite)
- Full-colour screen with icon based, easy navigation display (Plus/Pro)
- Communicates with your PC system and our OMS torque software (Pro only)
- Connect up to 5 Crane transducers or torque wrenches via RF (Pro only)

TorqueStar Lite / Plus / Pro



What's Included?

- Battery
- 5V PSU Power Adapter (choice of plug dependent on region)
- Neck Strap
- USB Flash Drive
- USB to Micro USB Connection Cable
- Type-A - A USB Cable (Pro Only)
- Quick Start Guide
- Calibration Certificate

TorqueStar Plus / Pro



TorqueStar Pro



Product Codes	TorqueStar Lite
TSLIX-0000-CRXXXX	TorqueStar Lite

Product Codes	TorqueStar Plus & Upgrades
TSPLX-0000-CRXXXX	TorqueStar Plus - Data Collector
TSPLX-0000-CRGXXX	TorqueStar Plus with Graphs - Data Collector
TSPLS-0000-CRGXXX	Graphs Upgrade for TorqueStar Plus
TSPRS-0000-CRXXUP	TorqueStar Plus to TorqueStar Pro upgrade

Product Codes	TorqueStar Pro & Upgrades
TSPRX-0000-CRXXRX	TorqueStar Pro - Data Collector
TSPRS-0000-CRTCUP	TorqueStar Pro Offline tool certification (OMS required)

Product Codes	Accessories
TSXXA-0000-CRBXXX	TorqueStar Lite/Plus/Pro Battery Pack
TSXXA-0000-CRCXXX	TorqueStar Lite/Plus/Pro External Battery Charger
TSXXA-0000-CRPEUX	TorqueStar Lite/Plus/Pro PSU - Euro Lead
TSXXA-0000-CRPUSX	TorqueStar Lite/Plus/Pro PSU - US Lead
TSXXA-0000-CRPUKX	TorqueStar Lite/Plus/Pro PSU - UK Lead
TSXXA-0000-CRSXXX	TorqueStar Lite/Plus/Pro Strap
CBL-788-01CR-0-0	Cable - Industry Standard Transducer With Angle (10pin) To TorqueStar
700-1500	Industry Standard Transducer (4Pin) To TorqueStar (Straight cable)
TO-899-09CR-0-0	5-Way Automatic Switching Module

IQVu-2 | Torque Data Collectors

The IQVu-2 series delivers the reliable and precise torque measurement and data recording capabilities that our torque data collectors are expected to, all built-in within a state-of-the-art, versatile and rugged tablet.



Key Features

- Versatile and rugged tablet with a super bright 10.1 in. display
- Multi mode capacitive touch with bare or gloved fingertip input
- 5ft (1.5m) tablet drop protection to concrete, exceeds MIL-STD-810H
- Multiple torque and angle measurement modes including Pulse, Yield, Track and MoveOn
- Control target, upper and lower limits for torque specifications
- Display of real time torque measurement curves
- Assembly actions can be scheduled using 'Jobs' and 'Rounds', allowing a planned approach to measuring and recording critical data
- Time and date stamped readings can quickly and easily be transferred to your PC or existing system
- Automatic Crane transducer and wrench recognition
- Individual operator profiles and password protection for user security

IQVu-2



What's Included?

- 5V PSU Power Adapter
- 3 x Power Adapter Cables (UK, EU, US)
- Hand Strap
- Quick Start Guide
- Calibration Certificate



Product Codes	IQVu-2
IQV2A-0000-CRCXRX	IQVu-2 Data Collector

Product Codes	Accessories
IQVS1-0001-CRWSXX	IQVu-2 Web Services (One Off Charge)
IQV2A-0000-CRMXRX	IQVu-2 - Module and Software
IQV2A-0000-CRTXRX	IQVu-2 Tablet
IQV2S-0000-CRXPXX	IQVu-2 Power Supply
IQV2S-0000-CRXDXX	IQVu-2 Docking station
IQV2S-0000-CRXBXX	IQVu-2 Battery

TCI-2 | Lineside Controller

The TCI-2 lineside tool controller allows the user to connect, setup and manage up to 5 digital torque wrenches for use in assembly and production applications. The TCI-2 also facilitates Curatas Wrench Control workstations for visual operator guidance.

Key Features

- Controls all WrenchStar Multi and WrenchStar Multi-e digital torque wrenches from Crane
- TCI-2 enables communication with users system or MES
- Communication methods include: Open Protocol, MQTTS, XML and CIFS file transfer. Compatible with ToolsNet8
- Optional Profinet and Ethernet IP communications
- LED status of connection to the host and wrenches
- Commands sent to the network via Ethernet or via selectable Wi-Fi; 5Ghz or 2.4Ghz
- PSK and Enterprise security, encrypted communication and MITM attack prevention
- Easy Job/Pset configured via a web browser
- HTTP content served via an HTTPS encrypted connection



What's Included?

- 12V Power Supply

Product Codes	TCI-2
TC2XX-0808-CRXXX5	TCI-2 Lineside Controller

Product Codes	Accessories
TC2XX-0000-CRP12X	TCI-2 Lineside Controller Power Supply
TC2XX-0000-CRXXPN	TCI-2 Anybus Module Profinet Card Only
TC2XX-0000-CRXXEI	TCI-2 Anybus Module EtherNet/IP Card Only

CheckStar Multi | Rotary Torque Transducer

The CheckStar Multi in-line rotary torque transducer raises the standard for dynamic torque and angle measurement of all continuous drive and impulse tools, with proven reliable performance in thousands of applications worldwide.



Key Features

- In-line rotary transducers with optional angle measurement
- Suitable for use with all continuous-drive tools, impulse tools and torque wrenches
- 360° light ring for instant fastener torque status
- Compatible with most industry standard data collectors and torque readouts
- Automatic transducer recognition with Crane data collectors and torque readout devices
- Patented design ensures no brush bounce even when used with impulse tools
- Low inertia benefits accurate dynamic measurement
- Low friction eliminates wear and supports accuracy
- Can be supplied with a cable or our RFm wireless communication device
- Available in various sizes from 1Nm up to 5000Nm (square and hex drives available)



What's Included?

- User Guide
- Calibration Certificate

Product Codes	CheckStar Multi
CMHAX-0001-CRXXXX	1/4" Hex 1Nm CheckStar Multi transducer
CMHAX-0001-CRXAXX	1/4" Hex 1Nm CheckStar Multi transducer with Angle
CMHAX-0002-CRXXXX	1/4" Hex 2Nm CheckStar Multi transducer
CMHAX-0002-CRXAXX	1/4" Hex 2Nm CheckStar Multi transducer with Angle
CMHAX-0005-CRXXXX	1/4" Hex 5Nm CheckStar Multi transducer
CMHAX-0005-CRXAXX	1/4" Hex 5Nm CheckStar Multi transducer with Angle
CMHAX-0010-CRXXXX	1/4" Hex 10Nm CheckStar Multi transducer
CMHAX-0010-CRXAXX	1/4" Hex 10Nm CheckStar Multi transducer with Angle
CMHAX-0020-CRXXXX	1/4" Hex 20Nm CheckStar Multi transducer
CMHAX-0020-CRXAXX	1/4" Hex 20Nm CheckStar Multi transducer with Angle
CMSAX-0005-CRPXXX	1/4" Square 5Nm CheckStar Multi transducer
CMSAX-0005-CRPAXX	1/4" Square 5Nm CheckStar Multi transducer with Angle
CMSAX-0010-CRPXXX	1/4" Square 10Nm CheckStar Multi transducer
CMSAX-0010-CRPAXX	1/4" Square 10Nm CheckStar Multi transducer with Angle
CMSAX-0020-CRPXXX	1/4" Square 20Nm CheckStar Multi transducer
CMSAX-0020-CRPAXX	1/4" Square 20Nm CheckStar Multi transducer with Angle

Product Codes	CheckStar Multi
CMSBX-0025-CRPXXX	3/8" Square 25Nm CheckStar Multi transducer
CMSBX-0025-CRPAXX	3/8" Square 25Nm CheckStar Multi transducer with Angle
CMSBX-0050-CRPXXX	3/8" Square 50Nm CheckStar Multi transducer
CMSBX-0050-CRPAXX	3/8" Square 50Nm CheckStar Multi transducer with Angle
CMSBX-0075-CRPXXX	3/8" Square 75Nm CheckStar Multi transducer
CMSBX-0075-CRPAXX	3/8" Square 75Nm CheckStar Multi transducer with Angle
CMSCX-0100-CRPXXX	1/2" Square 100Nm CheckStar Multi transducer
CMSCX-0100-CRPAXX	1/2" Square 100Nm CheckStar Multi transducer with Angle
CMSCX-0180-CRPXXX	1/2" Square 180Nm CheckStar Multi transducer
CMSCX-0180-CRPAXX	1/2" Square 180Nm CheckStar Multi transducer with Angle
CMSCX-0250-CRPXXX	1/2" Square 250Nm CheckStar Multi transducer
CMSCX-0250-CRPAXX	1/2" Square 250Nm CheckStar Multi transducer with Angle
CMSDX-0250-CRPXXX	3/4" Square 250Nm CheckStar Multi transducer
CMSDX-0250-CRPAXX	3/4" Square 250Nm CheckStar Multi transducer with Angle
CMSDX-0500-CRPXXX	3/4" Square 500Nm CheckStar Multi transducer
CMSDX-0500-CRPAXX	3/4" Square 500Nm CheckStar Multi transducer with Angle
CMSFX-0750-CRPXXX	1" Square 750Nm CheckStar Multi transducer
CMSFX-0750-CRPAXX	1" Square 750Nm CheckStar Multi transducer with Angle
CMSFX-1400-CRPXXX	1" Square 1400Nm CheckStar Multi transducer
CMSFX-1400-CRPAXX	1" Square 1400Nm CheckStar Multi transducer with Angle
CMSGX-3000-CRPXXX	1.5" Square 3000Nm CheckStar Multi transducer
CMSGX-3000-CRPAXX	1.5" Square 3000Nm CheckStar Multi transducer with Angle
CMSGX-5000-CRPXXX	1.5" Square 5000Nm CheckStar Multi transducer
CMSGX-5000-CRPAXX	1.5" Square 5000Nm CheckStar Multi transducer with Angle

Please note. All CheckStar Multi transducers are NOT supplied with a cable. Please see the accessories list.

Product Codes	Accessories
CBL-7025-02CR-0-0	CheckStar Multi To 25 Way Cable
CDWD1-0001-CRXXRX	RFm - RF Communication Device
TO-899-09CR-0-0	5-Way Automatic Switching Module

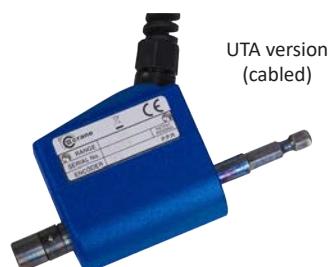
CheckStar | Rotary Torque Transducer

The CheckStar rotary torque transducer sets the standard for dynamic torque and angle measurement of all continuous drive and impulse tools, with proven reliable performance in thousands of applications worldwide.



Key Features

- In-line rotary transducers with optional angle measurement
- Suitable for use with all continuous-drive tools, impulse tools and torque wrenches
- Compatible with most industry standard data collectors and torque readouts
- Automatic transducer recognition with Crane data collectors and torque readout devices
- Compact design and no size increase for angle option
- Guaranteed no brush bounce through patented design
- Low inertia benefits accurate dynamic measurement
- Low friction eliminates wear and supports accuracy
- Available in various sizes from 1Nm up to 5000Nm (square and hex drives available)



What's Included?

- User Guide
- Calibration Certificate

Product Codes	CheckStar UTA
UT-449-01CR-1-0	1/4" Hex 1Nm CheckStar transducer
UT-449-02CR-1-A	1/4" Hex 1Nm CheckStar transducer with Angle
UT-451-02CR-5-AP	1/4" Square 5Nm UTA CheckStar transducer with Angle and Pin
UT-451-06CR-5-0P	1/4" Square 5Nm UTA CheckStar transducer with Pin
UTA-449-0002-0	1/4" Hex 2Nm UTA CheckStar transducer
UTA-449-0002-A	1/4" Hex 2Nm UTA CheckStar transducer with Angle
UTA-449-0005-0	1/4" Hex 5Nm UTA CheckStar transducer
UTA-449-0005-A	1/4" Hex 5Nm UTA CheckStar transducer with Angle
UTA-450-0010-0	1/4" Hex 10Nm UTA CheckStar transducer
UTA-450-0010-A	1/4" Hex 10Nm UTA CheckStar transducer with Angle
UTA-450-0020-0	1/4" Hex 20Nm UTA CheckStar transducer
UTA-450-0020-A	1/4" Hex 20Nm UTA CheckStar transducer with Angle
UTA-451-0010-0P	1/4" Square 10Nm UTA CheckStar transducer with Pin
UTA-451-0010-AP	1/4" Square 10Nm UTA CheckStar transducer with Angle and Pin
UTA-451-0020-0P	1/4" Square 20Nm UTA CheckStar transducer with Angle
UTA-451-0020-AP	1/4" Square 20Nm UTA CheckStar transducer with Angle and Pin

Product Codes	CheckStar UTA
UTA-452-0025-0P	3/8" Square 25Nm UTA CheckStar transducer with Pin
UTA-452-0025-AP	3/8" Square 25Nm UTA CheckStar transducer with Angle and Pin
UTA-452-0050-0P	3/8" Square 50Nm UTA CheckStar transducer with Pin
UTA-452-0050-AP	3/8" Square 50Nm UTA CheckStar transducer with Angle and Pin
UTA-452-0075-0P	3/8" Square 75Nm UTA CheckStar transducer with Pin
UTA-452-0075-AP	3/8" Square 75Nm UTA CheckStar transducer with Angle and Pin
UTA-677-0-75-0-0P	1/2" Square 75Nm UTA CheckStar transducer with Pin
UTA-677-0-75-0-AP	1/2" Square 75Nm UTA CheckStar transducer with Angle and Pin
UTA-453-0180-0P	1/2" Square 180Nm UTA CheckStar transducer with Pin
UTA-453-0180-AP	1/2" Square 180Nm UTA CheckStar transducer with Angle and Pin
UTA-454-0250-0P	3/4" Square 250Nm UTA CheckStar transducer with Pin
UTA-454-0250-AP	3/4" Square 250Nm UTA CheckStar transducer with Angle and Pin
UTA-454-0500-0P	3/4" Square 500Nm UTA CheckStar transducer with Pin
UTA-454-0500-AP	3/4" Square 500Nm UTA CheckStar transducer with Angle and Pin
UTA-455-0750-0P	1" Square 750Nm UTA CheckStar transducer with Pin
UTA-455-0750-AP	1" Square 750Nm UTA CheckStar transducer with Angle and Pin
UTA-455-1400-0P	1" Square 1400Nm UTA CheckStar transducer with Pin
UTA-455-1400-AP	1" Square 1400Nm UTA CheckStar transducer with Angle and Pin
UTA-477-3000-0P	1.5" Square 3000Nm UTA CheckStar transducer with Pin
UTA-477-3000-AP	1.5" Square 3000Nm UTA CheckStar transducer with Angle and Pin
UTA-477-01CR-5000-0P	1.5" Square 5000Nm UTA CheckStar transducer with Pin
UTA-477-5000-AP	1.5" Square 5000Nm UTA CheckStar transducer with Angle and Pin

Product Codes	CheckStar IS
IS-448-0002-0	1/4" Hex 2Nm IS CheckStar transducer
IS-448-0002-A	1/4" Hex 2Nm IS CheckStar transducer with Angle
IS-449-0005-0	1/4" Hex 5Nm IS CheckStar transducer
IS-449-0005-A	1/4" Hex 5Nm IS CheckStar transducer with Angle
IS-451-0005-0P	1/4" Square 5Nm IS CheckStar transducer with Pin
IS-451-0005-AP	1/4" Square 5Nm IS CheckStar transducer with Angle and Pin
IS-450-01CR-10-0	1/4" Hex 10Nm IS CheckStar transducer
IS-450-03CR-10-A	1/4" Hex 10Nm IS CheckStar transducer with Angle

Product Codes	CheckStar IS
IS-451-01CR-10-0P	1/4" Square 10Nm IS CheckStar transducer with Pin
IS-451-01CR-10-AP	1/4" Square 10Nm IS CheckStar transducer with Angle and Pin
IS-450-0020-0	1/4" Hex 20Nm IS CheckStar transducer
IS-450-0020-A	1/4" Hex 20Nm IS CheckStar transducer with Angle
IS-451-0020-0P	1/4 Square 20Nm IS CheckStar transducer with Pin
IS-451-0020-AP	1/4" Square 20Nm IS CheckStar transducer with Angle and Pin
IS-456-0025-0P	3/8" Square 25Nm IS CheckStar transducer with Pin
IS-456-01CR-25-AP	3/8" Square 25Nm IS CheckStar transducer with Angle and Pin
IS-452-0050-0P	3/8" Square 50Nm IS CheckStar transducer with Angle and Pin
IS-452-0050-AP	3/8" Square 50Nm IS CheckStar transducer with Angle and Pin
IS-452-0075-0P	3/8" Square 75Nm IS CheckStar transducer with Pin
IS-452-0075-AP	3/8" Square 75Nm IS CheckStar transducer with Angle and Pin
IS-453-0180-0P	1/2" Square 180Nm IS CheckStar transducer with Pin
IS-453-0180-AP	1/2" Square 180Nm IS CheckStar transducer with Angle and Pin
IS-687-0-250-0-0P	3/4" Square 250Nm IS CheckStar transducer with Pin
IS-454-03CR-250-AP	3/4" Square 250Nm IS CheckStar transducer with Angle and Pin
IS-454-0500-0P	3/4" Square 500Nm IS CheckStar transducer with Pin
IS-454-0500-AP	3/4" Square 500Nm IS CheckStar transducer with Angle and Pin
IS-455-1400-0P	1" Square 1400Nm IS CheckStar transducer with Pin
IS-455-1400-AP	1" Square 1400Nm IS CheckStar transducer with Angle and Pin
IS-477-3000-0P	1.5" Square 3000Nm IS CheckStar transducer with Pin
IS-477-02CR-3000-AP	1.5" Square 3kNm IS CheckStar transducer with Angle and Pin
IS-477-01CR-5000-0P	1.5" Square 5kNm IS CheckStar transducer with Pin
IS-477-5000-AP	1.5" Square 5000Nm IS CheckStar transducer with Angle and Pin

Product Codes	Accessories
TO-899-09CR-0-0	5-Way Automatic Switching Module (not compatible with IS transducers, UTA only)
700-1500	Industry Standard Transducer (4 Pin) To TorqueStar (Straight cable)
CBL-760-0-0-0-0	Industry Standard Transducer (4 Pin) to TorqueStar Curly Cable
CBL-788-01CR-0-0	Cable - Industry Standard Transducer With Angle (10pin) To TorqueStar

Lorenz Messtechnik GmbH | Torque Transducers

We are proud to be the official distributor for Lorenz Messtechnik GmbH products in the UK and USA.

Lorenz Messtechnik GmbH also manufacture a series of torque sensors, force sensors, load cells as well as the corresponding measured data evaluation units. We can also offer their range of test benches for the acquisition of speed, torque, force and special sensors.

Alongside our own portfolio of custom torque measurement solutions and advanced services, offering the Lorenz Messtechnik GmbH product portfolio gives us one of the most complete torque management offerings on the market.

For more information contact us online at www.crane-electronics.com, alternatively;

In the UK, email us at sales@crane-electronics.com or call us on +44(0)1455 25 14 88.

In the USA, email us at salesusa@crane-electronics.com or call +1 309-787-1263.



Featured Products:

DR-2112 - Free Floating Version

High-speed, bearingless rotary torque transducer with non-contact data transmission. Offers analogue or digital outputs and plug-and-play USB connectivity. Ideal for dynamic torque measurements in a number of applications including engines, motors, gears and screw-driving applications.

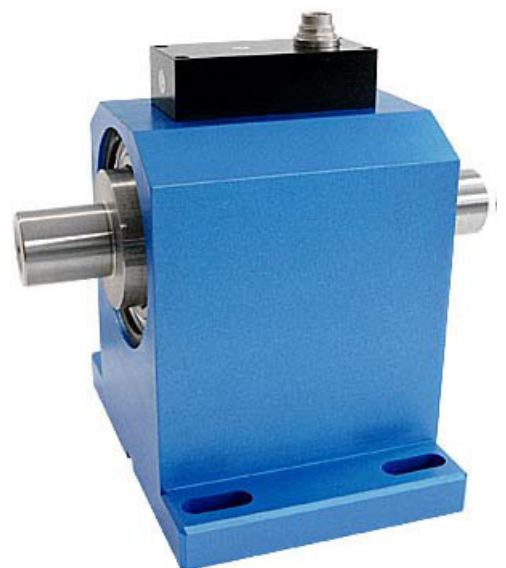
Available in torque spans from 0.1 up to 20,000Nm.



DR-2112 - Foot Mounted Version

Stable, foot-mounted rotary torque transducer with non-contact data transmission. Available with analogue or digital outputs, including USB plug-and-play. Perfect for test benches and industrial torque monitoring with high-speed, friction-free accuracy.

Available in torque spans from 0.1Nm up to 20,000Nm.



Joint Kits | Accessories

It is essential in the testing of assembly tools to consider the joint condition that the tool will experience 'on the job'. Joint kits allow operators to test tools by 'tightening' a bolt with a torque gradient closely matched to the production joint condition.



Key Features

- Represent production joint conditions off the production line
- Major benefit to accurate tool test and set-up
- Can be adjusted to include joint conditions specified by ISO 5393
- Used in combination with Crane's Static torque transducers and the CheckStar and CheckStar Multi rotary torque transducers
- Allows free running of bolt before torque gradient



Table Top version



Transducer Top (Female) version

What's Included?

- User Guide

Product Codes	Transducer Top / Female - (Joint Kits for use with Static Transducers)
JK-874-06CR-28-0	1/4" Female Joint Kit
JK-874-07CR-135-0	3/8" Female Joint Kit
JK-874-08CR-271-0	1/2" Female Joint Kit
JK-874-09CR-1017-0	3/4" Female Joint Kit
JK-874-10CR-1695-0	1" Female Joint Kit
JK-874-22CR-5000-0	1.5" Female Joint Kit

Product Codes	Table Top - (Joint Kits for use with Rotary Transducers)
JK-875-06CR-28-0	1/4" 28 Nm Table Top Joint Kit
JK-875-07CR-135-0	3/8" 135Nm Table Top Joint Kit
JK-875-08CR-271-0	1/2" 271Nm Table Top Joint Kit
JK-875-09CR-1017-0	3/4" 1017Nm Table Top Joint Kit
JK-875-10CR-1695-0	1" 1695Nm Table Top Joint Kit
JK-875-13CR-2500-0	1.5" 2500Nm Table Top Joint Kit
JK-875-12CR-5000-0	1.5" 5000Nm Table Top Joint Kit

Product Codes	Spare Bolt & Nut Kits
JK-874-13CR-0-0	1/4" Joint Bolt Kit - Guide Bolt and Nut only
JK-874-14CR-0-0	3/8" Joint Bolt Kit - Guide Bolt and Nut only
JK-874-15CR-0-0	1/2" Joint Bolt Kit - Guide Bolt and Nut only
JK-874-16CR-0-0	3/4" Joint Bolt Kit - Guide Bolt and Nut only
JK-874-17CR-0-0	1" Joint Bolt Kit - Guide Bolt and Nut only

Static Transducer | Stationary Transducer

Static torque transducers are the quality choice for testing continuous drive, impulse and hand tools in the workshop or production lineside environment. Combined with joint kits, they can help represent the actual joint condition the tool will be used upon.



Key Features

- Suitable for measurement of all continuous drive, impulse and hand torque tools
- Automatic transducer recognition with Crane readout devices
- Combine with joint kits for workshop simulation of hard to soft joints
- Incorporate into custom built mobile test stations
- Available in sizes from 3.5Nm up to 5000Nm
- Light ring versions available (up to 1/2" as standard) for visual indication system



What's Included?

- User Guide
- Calibration Certificate

Product Codes	Static Transducer - UTA (Female/Male)
UTA-164-0-3.54-0-0	1/4" 31.36inlb/3.54Nm Female Stationary transducer
UTA-164-0-25	1/4" 50inlb/5.649Nm Female Stationary transducer
UTA-165-0-25	1/4" 100inlb/11.3Nm Female Stationary transducer
UTA-166-0-25	1/4" 250inlb/28.25Nm Female Stationary transducer
UTA-167-0-35	3/8" 50ftlb/67.79Nm Female Stationary transducer
UTA-168-0-35	3/8" 100ftlb/135Nm Female Stationary transducer
UTA-169-0-35	1/2" 200ftlb/271.2Nm Female Stationary transducer
UTA-170-0-35	3/4" 400ftlb/542.3Nm Female Stationary transducer
UTA-171-0-35	3/4" 750ftlb/1017Nm Female Stationary transducer
UTA-172-0-35	1" 1250ftlb/1695Nm Female Stationary transducer
UT-115-00CR-3000-0	1.5" 3000Nm Male Stationary transducer
UT-115-00CR-5000-0	1.5" 5000Nm Male Stationary transducer

Product Codes	Static Transducer with Light Ring - UTA (Female)
TSU2X-0003-CRLXXX	1/4" 50inlb/3.54Nm Female Stationary transducer with LED
TSU2X-0005-CRLXXX	1/4" 50inlb/5.649Nm Female Stationary transducer with LED
TSU2X-0011-CRLXXX	1/4" 100inlb/11.3Nm Female Stationary transducer with LED
TSU2X-0028-CRLXXX	1/4" 250inlb/28.25Nm Female Stationary transducer with LED
TSU2X-0067-CRLXXX	3/8" 50ftlb/67.79Nm Female Stationary transducer with LED
TSU2X-0135-CRLXXX	3/8" 100ftlb/135.6Nm Female Stationary transducer with LED
TSU2X-0271-CRLXXX	1/2" 200ftlb/271.2Nm Female Stationary transducer with LED

Product Codes	Static Transducer - IS (Female)
IS-873-08CR-11-0	1/4" 100inlb/11.3Nm IS Female Stationary transducer
IS-873-10CR-28-0	1/4" 250inlb/28.25Nm IS Female Stationary transducer
IS-873-12CR-67-0	3/8" 50ftlb/67.8Nm IS Female Stationary transducer
IS-873-14CR-135-0	3/8" 100ftlb/135.6Nm IS Female Stationary transducer
IS-873-16CR-271-0	1/2" 200ftlb/271.2Nm IS Female Stationary transducer
IS-873-18CR-1017-0	3/4" 750ftlb/1017Nm IS Female Stationary transducer
IS-873-20CR-1695-0	1" 1250ftlb/1695Nm IS Female Stationary transducer

Product Codes	Accessories
TO-899-09CR-0-0	5-Way Automatic Switching Module
700-1500	Industry Standard Transducer (4Pin) to TorqueStar (Straight cable)
CBL-760-0-0-0-0	Industry Standard Transducer (4Pin) to TorqueStar (Curly Cable)

Impact Tool Static Transducer | Stationary Transducer

The impact tool compatible stationary transducer can be used alongside a Crane torque wrench when setting up an impact tool and for verification both off-line in workshops or line-side on mobile testing stations.



Key Features

- Suitable for measurement of all continuous drive, impulse, impact power tools and hand torque tools
- Combine with joint kits for workshop simulation of hard to soft joints
- Automatic transducer recognition with Crane readout devices
- Available in a range of torque ratings from 75Nm up to 600Nm

What's Included?

- User Guide
- Calibration Certificate

Product Codes	Static Transducers - Impact Tool Compatible
STU1X-0075-CRXXXX	3/8" 75Nm UTA Stationary transducer compatible with Impact Tool. Auto ID
STU1X-0180-CRXXXX	1/2" 180Nm UTA Stationary transducer compatible with Impact Tool. Auto ID
STU1X-0340-CRXXXX	3/4" 340Nm UTA Stationary transducer compatible with Impact Tool. Auto ID
STU1X-0600-CRXXXX	3/4" 600Nm UTA Stationary transducer compatible with Impact Tool. Auto ID

TS Series | Stationary Transducer

The TS Series of static torque transducers are designed for precision, reliability and durability in demanding environments such as offshore, marine and oil & gas. Offering cost-effective solutions for static and semi-rotary torque measurement, these series supports a wide variety of applications from tool testing and calibration. The series consists of flange to flange, flange to square and square to square transducers.

Product Codes	TSF/TSFA Series - Flange to Flange
TSF-10	TSF-10Nm Flange to Flange Static Transducer in stainless steel
TSF-500	TSF-500Nm Flange to Flange Static Transducer in stainless steel
TSF-10K	TSF-10kNm Flange to Flange Static Transducer in stainless steel
TSF-20K	TSF-20kNm Flange to Flange Static Transducer in stainless steel
TSF-30K	TSF-30kNm Flange to Flange Static Transducer in stainless steel
TSF-50K	TSF-50kNm Flange to Flange Static Transducer in stainless steel
TSFA-565-DB	TSFA-565Nm Flange to Flange Static Transducer in aluminium, dual bridge
TSFS-10K	TSFS-10kNm Flange to Flange Static Transducer in steel
TSFS-20K	TSFS-20kNm Flange to Flange Static Transducer in steel
TSFS-30K	TSFS-30kNm Flange to Flange Static Transducer in steel
TSFS-50K	TSFS-50kNm Flange to Flange Static Transducer in steel



TSF Series

Product Codes	TSFF/TSSF Series - Flange to Square
TSFF-3000-S38-V1	TSFF-3kNm Flange to 1.5" Female Square Drive Transducer
TSFF-3000-S38-V1-EP	TSFF-3kNm Flange to 1.5" Female Square Drive Transducer with Auto ID connection
TSFF-3500-S38-V1	TSFF-3.5kNm Flange to 1.5" Female Square Drive Transducer
TSFF-5000-S38-V1	TSFF-5kNm Flange to 1.5" Female Square Drive Transducer
TSSF-7000-S50-V1-A1	TSSF-7kNm Flange to 2" Male Square Drive Static Transducer
TSFF-15000-S63	TSFF-15000Nm Flange to 2.5" Male to Square Static Transducer
TSSF-300/1	TSSF-300Nm Flange to 1" Male Square Drive Static Transducer
TSSF-3000-S35-V1-EP	TSSF-3000Nm 1 3/8" Male Square Static Reaction Transducer
TSSF-3000-S35-V1	TSSF-3000Nm 1 3/8" Male Square Static Reaction Transducer
TSSF-3000-S38	TSSF-3kNm Flange to 1.5" Male Square Drive Static Transducer
TSSF-7000-S50-V1	TSSF-7kNm Flange to 50mm Male Square Drive Transducer in stainless steel



TSFF Series



TSSF Series

Product Codes	TSS/TSSS Series - Square to Square
TSS-1000-A2-B	TSS 1000 Shaft
TSS-4000	TSS-4kNm 1.5" Male Square to 1.5" Female Square Drive Transducer
TSS-15KNM-EP	TSS-15kNm 2.5" Male to 2.5" Female Sq. Transducer, Auto ID connect to TorqueStar
TSS-50K	TSS-50kNm Male to 2.5" Female Square Drive Transducer in stainless steel
TSS-75K	TSS-75kNm Male to 3.5" Female Square Drive Transducer in stainless steel
TSSS-20K	TSSS-20kNm 2" Male to Male Square DV Static Torque Reaction Transducer
TSSS-135K	TSSS-135kNm Male to 3.5" Male Square Static Torque Reaction Transducer
TSSS-271K	TSSS-271kNm Male to 6" Male Square Static Torque Reaction Transducer



TSS Series



TSSS Series

TDC | Deck Torque Calibrator

The robust TDC deck calibrator is a precision tool for calibrating deck analysers. The design allows calibration of the torque cell whilst still in its bucket, avoiding disassembly and the need to return of the bucket torque cell to the manufacturer for calibration.



Key Features

- Robust, user-friendly calibrator designed for precision calibration of deck analysers
- Allows torque cell calibration in its bucket, avoiding disassembly and return to the manufacturer
- Designed for 17D buckets; includes gearbox, adaptor plate, reference transducer, square drive adaptor, and TR150 readout unit
- Reference transducer accuracy of $\pm 0.30\%$ (10–100% FSR); Class 5, 6, and 7 calibrators available on request



What's Included?

- Calibration Certificate
- Gearbox
- Adaptor Plate
- Reference Transducer
- Square Drive Adapter
- TR150 display unit

Product Codes	TDC - Deck Torque Calibrator
TDC-C4	Deck Calibrator Class 4 (3kNm)
TDC-C5	Deck Calibrator Class 5
TDC-C6	Deck Calibrator Class 6
TDC-C7	Deck Calibrator Class 7

ReadStar TT | Torque Tester

The ReadStar TT torque tester is specifically designed for testing assembly tools, accurately measuring the torque they deliver and recording the data for auditing purposes. This straightforward torque tester is an essential tool for manufacturers.



Key Features

- Easy to operate for fast and accurate torque readings and assembly tool testing
- Memory for 999 date- and time-stamped readings for complete traceability
- Easy download of all measurement readings to a PC
- 3-colour LED indication of torque measurement status
- Choice of measurement modes including Track, Peak, Pulse and Click
- Clear and easy-to-read white OLED screen for basic torque data readings and alerts
- Automatically switches to highest voltage power source (mains / USB / batteries)
- Optional premium joint kit for soft/hard joint tests



What's Included?

- Standard Rundown Adapter (for medium joints)
- 2 x Type 'C' Cell non-rechargeable batteries
- Quick Start Guide
- Calibration Certificate

Product Codes	ReadStar TT
RSTT2-X0.5-CRXXXX	0.5Nm (4.4IN/LB) ReadStar TT
RSTT2-0001-CRXXXX	1Nm (8.8IN/LB) ReadStar TT
RSTT2-0004-CRXXXX	4Nm (35IN/LB) ReadStar TT
RSTT2-0012-CRXXXX	12Nm (106IN/LB) ReadStar TT
RSTT2-0030-CRXXXX	30Nm (265IN/LB) ReadStar TT

Product Codes	Accessories
RSXXA-0000-CRPNCX	ReadStar TT/CapStar PSU - without lead/plug
RSXXA-0000-CRPEUX	ReadStar TT/CapStar PSU - EU lead/plug
RSXXA-0000-CRPUSX	ReadStar TT/CapStar PSU - US lead/plug
RSXXA-0000-CRPUKX	ReadStar TT/CapStar PSU - UK lead/plug
TAXXA-0001-CRRAXX	1Nm Run Down Adaptor
TAXXA-0004-CRRAXX	4Nm Run Down Adaptor
TAXXA-0012-CRRAXX	12Nm Run Down Adaptor
TAXXA-0030-CRRAXX	30Nm Run Down Adaptor
TAXXA-0001-CRJKXX	1Nm Premium Joint Kit
TAXXA-0004-CRJKXX	4Nm Premium Joint Kit

Product Codes	Accessories
TAXXA-0012-CRJXXX	12Nm Premium Joint Kit
TAXXA-0030-CRJXXX	30Nm Premium Joint Kit
TAXXS-0001-CRRASX	1Nm Run Down Adaptor Spares
TAXXS-0004-CRRASX	4Nm Run Down Adaptor Spares
TAXXS-0012-CRRASX	12Nm Run Down Adaptor Spares
TAXXS-0030-CRRASX	30Nm Run Down Adaptor Spares
TAXXS-0001-CRJKSX	1Nm Premium Joint Kit Spares
TAXXS-0004-CRJKSX	4Nm Premium Joint Kit Spares
TAXXS-0012-CRJKSX	12Nm Premium Joint Kit Spares
TAXXS-0030-CRJKSX	30Nm Premium Joint Kit Spares

CapStar | Torque Tester

The CapStar cap closure torque tester is a simple and easy-to-operate digital torque tester, specifically designed for applications within the pharmaceutical, cosmetics, food & beverage industries and many more.



Key Features

- Accurate digital measurement of bottle cap/closure release torque (sigma, mean and range)
- Memory for 999 date- and time-stamped readings for complete traceability
- Easy download of all measurement readings to a PC
- 3-colour LED indication of torque measurement status
- Built-in transducer and adjustable clamp fixture available in 2Nm, 4Nm and 6Nm sizes
- Strong, durable and robust; perfect for production, quality and testing environments
- Drip-proof and can either be fixed permanently or used as a portable device

Product Codes	CapStar
RSCS2-0002-CRXXXX	2Nm (17.7IN/LB) CapStar
RSCS2-0004-CRXXXX	4Nm (35IN/LB) CapStar
RSCS2-0006-CRXXXX	6Nm (53IN/LB) CapStar

Product Codes	Accessories
RSXXA-0000-CRPNCX	ReadStar TT/CapStar PSU - without lead/plug
RSXXA-0000-CRPEUX	ReadStar TT/CapStar PSU - EU lead/plug
RSXXA-0000-CRPUSX	ReadStar TT/CapStar PSU - US lead/plug
RSXXA-0000-CRPUKX	ReadStar TT/CapStar PSU - UK lead/plug
BT-479-1-0	CapStar - Long Pegs

Wrenchmate | Torque Tester

The Wrenchmate is a robust, simple, user-friendly wrench torque tester for checking and setting torque wrenches. Designed to be strong and robust for assembly, manufacturing or workshop environments, they can be wall or worktop mounted.



Key Features

- Measures the torque of all click and dial-type torque wrenches
- Aluminium alloy housing with powder coated finish
- Accuracy $\pm 1\%$ reading (± 1 digit) over the operating range
- Alternate measurement units from Nm to lb.ft
- Peak (click wrenches) and Track (dial wrenches) measurement modes
- Range in peak mode is 10% to 100% of full scale
- Meets EMC regulations
- Available in 50, 360 and 1100 Nm versions

What's Included?

- 12V PSU power supply
- Calibration Certificate

Product Codes	WrenchMate
WM50	WrenchMate 50Nm
WM360	WrenchMate 360Nm
WM1100	WrenchMate 1100Nm

WM10K | Torque Tester

The WM10K is designed for use with pneumatic and electric torque multiplier tools and other high torque tools. The WM10K allows users to check torque accuracy, run calibration tests and create calibration certificates prior to use on-site.



Key Features

- Accurately measures torque output for continuous rotation tools from 200 to 10,000 Nm
- Adaptable design enables use with a large variety of torque wrenches and tools
- Peak and Track measurement modes
- A small OLED display that is clear and bright
- Internal Lithium-ion battery, external 5V DC USB power supply
- Standard USB cable for communication with Windows-based PCs
- Integrated digital interface enables torque values to be displayed, saved, printed or transferred to a computer utilising Excel software

What's Included?

- 1 x Dynamic rundown fixture with (1.5" female square drive)
- Standard Reaction Stop
- Secondary Reaction Post

Product Codes	WM10K
WM10K	1.5" Square Drive 10kNm WrenchMate with Companion Software

Curatas Wrench Control | Software

Curatas Wrench Control provides a visual guidance system for assembly operators and quality auditing personnel, who are using Crane torque measurement equipment.

Curatas Wrench Control allows manufacturers to setup a visual sequence of actions that an operator can follow to complete the assembly of a part or component. The easy-to-use module uses clear images and indicators to make the process as simple as possible.



Key Features

- Visualisation of assembly process steps
- Assembly/Part image guidance & arrow annotation
- Barcode or Job reference sequence selection
- Data input and OK/NOK screen acknowledgement
- Simple operator login; RFID & barcode capability
- Results viewable by complete build or individual installations, with graphs and time data
- Works in combination with our TCI controllers and our WrenchStar Multi torque wrenches

Example Step-by-step Process



Example Curatas Wrench Control Setup



Product Codes	Curatas Wrench Control
CSWWC-0001-CRXXXX	Curatas Wrench Control Software (single licence)
CSWSP-0001-CRXXXX	Curatas Software Support Package

OMS | Software

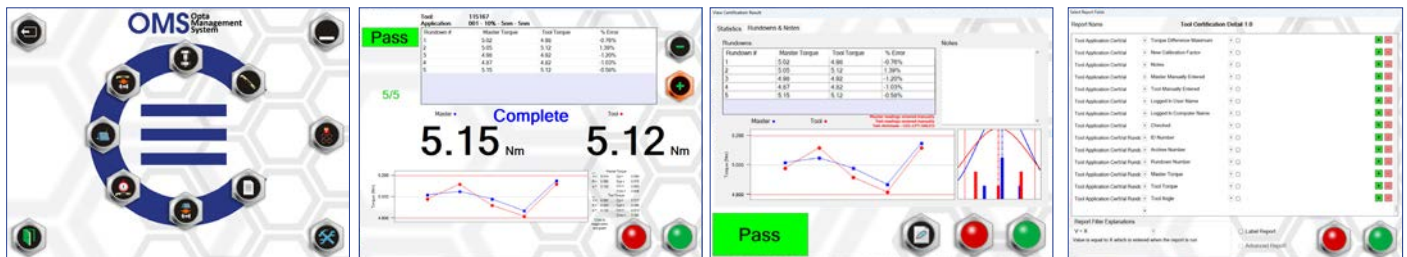
OMS is our complete torque software package which features a fully encompassing range of functions, providing a company-wide solution to all torque related activities.

OMS torque software includes tool and joint management, tool repair & maintenance histories, quality torque auditing and production data collection, R&D data storage including torque/time/angle analysis plus transducer and readout calibrations.



Key Features

- Single database to store torque information from all departments
- Management of audit tooling – transducers, wrenches and readouts
- Overlay or cross reference assembly, quality and tooling info
- Management of all production torque tooling including assigning them to specific processes, managing calibration history and scheduled recalibration dates
- All data completely traceable and secure
- User friendly operation with intuitive icons for click or touchscreen
- Advanced report generator & data capture in real time



Product Codes	OMS Software
OMSXX-0001-AUDITD	Audit Devices On Applications
OMSXX-0005-AUDITD	Audit Devices On Applications 2 To 5 Seats
OMSXX-0015-AUDITD	Audit Devices On Applications 6 To 15 Seats
OMSXX-0001-REPORT	Customized Reporting Engine
OMSXX-0005-REPORT	Customized Reporting Engine 2 To 5 Seats
OMSXX-0015-REPORT	Customized Reporting Engine 6 To 15 Seats
OMSXX-0001-TOOLMM	Tool Maintenance Management
OMSXX-0005-TOOLMM	Tool Maintenance Management 2 To 5 Seats
OMSXX-0015-TOOLMM	Tool Maintenance Management 6 To 15 Seats
OMSXX-0001-CERTTT	Tool Certification For Transducerised Tools
OMSXX-0005-CERTTT	Tool Certification For Transducerised Tools 2 To 5 Seats
OMSXX-0015-CERTTT	Tool Certification For Transducerised Tools 6 To 15 Seats
OMSXX-0001-CERTST	Tool Certification For Standard Tooling
OMSXX-0005-CERTST	Tool Certification For Standard Tooling 2 To 5 Seats
OMSXX-0015-CERTST	Tool Certification For Standard Tooling 6 To 15 Seats
OMSXX-0001-DWCALS	Dead Weight Calibrations
OMSXX-0005-DWCALS	Dead Weight Calibrations 2 To 5 Seats
OMSXX-0015-DWCALS	Dead Weight Calibrations 6 To 15 Seats

OMS Lite | Software

OMS Lite is an intuitive torque management software package, in a more compact and easy-to-use format than most other torque software packages.

OMS Lite offers an updated interface, following our recognisable and user-friendly icon-based navigation system for faster speed of use, ideal for production process and quality verification as well as assembly tool auditing.



Key Features

- Single database to store torque information from all departments
- User-friendly operation with intuitive icons for click or touchscreen
- All data completely traceable and secure
- Selection of Excel reports with graphs come as standard
- Trace functionality available as standard with the ability to overlay multiple torque curves
- Management of all audit tooling – transducers, wrenches and data collectors/readouts
- Bespoke reports are available upon request, designed by Crane



Product Codes	OMS Lite Software
OMSL1-0001-CRXXXX	OMS Lite Software (single licence)

Readings Capture | Software

Readings Capture is a basic, easy-to-use software program that allows you to transfer vital data to your PC. You can connect your Crane data collector or lineside controller to your PC and export your torque and angle results into a useful spreadsheet format.



Key Features

- Basic, easy-to-use data transfer software
- Export torque and angle readings and results
- Compatible with Crane data collectors, controllers and torque testers
- Requires Microsoft Excel to operate

Product Codes	Readings Capture
TSSWX-00RC-CRXXXX	Readings Capture Software

Threaded Joint Rate Simulator (tJRS) | Joint Test Bench

The tJRS is the only fully automated joint test bench that utilises a threaded fastener system. This means that joint conditions can be set up in the same way as in real fastener applications and the joint can be automatically 'backed off' after each test. As a result, assembly tools can be tested offline, under the most realistic conditions.



Key Features

- Realistic simulation of assembly fastener applications for authentic tool testing
- Fully automated quick release of fastener and variable joint rate from soft to hard
- Innovative threaded fastener and nut mechanism
- Test assembly tools in accordance with VDI/VDE 2647 standards
- Torque, angle and impulse count with Track, Peak, Click and Pulse measurements
- Incorporates Crane's leading torque management software, OMS
- Robust, durable construction for reliable testing in the most demanding environments
- Available in 100Nm, 250Nm, 330Nm, 500Nm and 1000Nm ranges



Product Codes	tJRS - Joint Test Bench
TJMXX-0100-CRABXX	100Nm tJRS (Threaded Joint Simulator) (10 & 100Nm Beams) and TorqueStar Pro
TJMXX-0250-CRAGKX	250Nm tJRS (Threaded Joint Simulator) (10, 50, & 250Nm Beams) and TorqueStar Pro
TJMXX-0330-CRJEXX	330Nm tJRS (Threaded Joint Simulator) (25 & 330Nm Beams) and TorqueStar Pro
TJMXX-0500-CRABCX	500Nm tJRS (Threaded Joint Simulator) (10, 100, & 500Nm Beams) and TorqueStar Pro
TJP1X-1000-CRLEJX	1000Nm tJRS (Threaded Joint Simulator) (25, 330 & 1000Nm Beams) and TorqueStar Pro

Product Codes	Accessories
TJCXX-0010-CRASXX	1/4" 10Nm tJRS CHECKSTAR + AP
TJCXX-0020-CRASXX	3/8" 20Nm tJRS CHECKSTAR + AP
TJCXX-0025-CRASXX	3/8" 25Nm tJRS CHECKSTAR + AP
TJCXX-0050-CRASXX	3/8" 50Nm tJRS CHECKSTAR + AP
TJCXX-0075-CRASXX	3/8" 75Nm tJRS CHECKSTAR + AP
TJCXX-0100-CRASXX	1/2" 100Nm tJRS CHECKSTAR + AP
TJCXX-0180-CRASXX	1/2" 180Nm tJRS CHECKSTAR + AP
TJCXX-0250-CRASXX	1/2" 250Nm tJRS CHECKSTAR + AP
TJCXX-0330-CRASXX	1/2" 330Nm tJRS CHECKSTAR + AP
TJCXX-0500-CRASXX	3/4" 500Nm tJRS CHECKSTAR + AP
TJCXX-0600-CRASXX	3/4" 600Nm tJRS CHECKSTAR + AP
TJCXX-1400-CRASXX	1" 1400Nm tJRS CHECKSTAR + AP
CBL-7024-01CR-0-0	tJRS CheckStar OPTA Cable
TJWLX-0000-CRXXXX	600Nm NON-ISO tJRS WRENCHLOADER
TJWLX-1000-CRXXXX	1000Nm tJRS WrenchLoader (Non-ISO)

Mobile Torque Testing Station (MTTS) | Test Bench

The Mobile Torque Testing Station (MTTS) is a portable tool station which also provides a reliable platform and surface to test the torque readings of your tools at the side of the assembly line plus a useful storage trolley for all other tools and torque equipment.



Key Features

- Flexible design, light and easy to manoeuvre
- Durable and robust wheels for portable line-side tool testing
- Battery-powered and WrenchLoader mounted versions are also available
- Various accessories available including printers, barcode scanners and various screen options
- Optional rotary or static torque transducers
- Vertical or horizontal transducer mounting available
- Optional joint kits for simulation of hard and soft joints
- Optional torque data collectors for recording and storing collated data
- Can be configured to communicate with your system or with our OMS torque management software

Customised MTTS Examples



Can be supplied with rotary and static transducers, joint kits, label printers and OMS Lite software



Can be supplied with a mounted WrenchLoader for calibrations, as well as bespoke tablets with OMS software



Can be supplied with a torque data collector (TorqueStar/IQVu-2) with all required torque measurement equipment

Product Codes	MTTS (Mobile Torque Testing Station)
CT-997-17CR-0-0	Large MTTS Opta
CT-997-16CR-0-1	Large MTTS Opta with Side Mounting
CT-997-24CR-0-0	Large MTTS Opta (Mains powered)
CT-997-28CR-0-0	Large MTTS with Shelf Unit
BMTTS-0000-CRXXXX	Bench-Mounted Torque Testing Station including MTTS Top Plate

Product Codes	Accessories
CT-997-14CR-0-0	MTTS Top Plate
CT-997-05CR-0-0	330mm Reaction Arm & Accessory Kit
CT-997-12CR-0-0	600mm Reaction Arm & Accessory Kit
TO-899-09CR-0-0	5-Way Automatic Switching Module
WLFXX-0600-CRINXX	600Nm ISO WrenchLoader (No Extension)
WLFXX-0600-CRIEXX	600Nm ISO WrenchLoader (With Extension)

Mobile Auditing Station (MAS) | Test Bench

The Mobile Auditing Station (MAS) is a portable torque and angle auditing station which provides a reliable platform and surface to test the torque readings of fasteners and critical joints in your assembly process as well as production and assembly tools.

Key Features

- Flexible design, light and easy to manoeuvre
- Durable and robust wheels for portable line-side tool testing
- Adjustable handle height for comfortable continuous use
- Continuously charges wrenches and data collector to save time
- Interchangeable internal 12V lithium battery for continuous use
- Intelligent power management for use across shifts
- Store and charge torque wrenches ranging from 10Nm to 1500Nm
- Optional data collector, base plate, barcode scanner or charging dock



Customised MAS Examples



The MAS can be supplied with a data collector (TorqueStar/IQVu-2) as well as a wide range of WrenchStar Multi's for complete torque auditing.



The MAS trolley can be supplied with a laptop, tablet or a screen, as well as a mounted plinth or platform to hold your chosen screen.



The MAS can also be supplied with a TCI-2 lineside controller as well as our Curatas software, for a portable assembly or auditing station.

Product Codes	MAS (Mobile Auditing Station)
CT-997-06CR-0-0	Mobile Audit Station (MAS)
CT-997-25CR-0-0	Mobile Audit Station (MAS) with Baseplate

Product Codes	Accessories
CT-997-14CR-0-0	Top Plate
TO-899-09CR-0-0	5-Way Automatic Switching Module

Load Cells & Displays | Industrial Torque

We are also able to supply a series of load cells and connected digital displays. Load cell transducers are crucial components in many industrial weighing systems and processes. Load cells measure weight in the form of directional force using a mix of spring elements and strain gauges to convert the weight measurement into an electrical output.

Our Pancake and S Beam ranges of load cells are both suitable for use in both tension and compression and are suitable for a variety of applications including low-range monitoring, control, test and measurement applications. Both types of load cells are robust and durable to meet the demands of their environments.

Our Donut range of load cells features a compact, smooth through-hole design for use in applications which require the load structure to pass through the cell. The load cells offer high accuracy measurement and our standard models can also be customised to meet your specific application.

To find out more about the different load cells and displays we can provide, please visit our website at www.crane-electronics.com.

For a specific quote for a load cell to fit your application;

In the UK, email sales@crane-electronics.com or call +44(0)1455 25 14 88.

In the USA, email salesusa@crane-electronics.com or call +1 309-787-1263.

Pancake Load Cells



S-Beam Load Cells



Donut Load Cells



TR150 Load Cell Display



Service, Repair & Calibration | Services

The importance of calibration for torque measurement equipment can never be underestimated. Equipment such as torque wrenches, torque transducers and data collectors are used across a number of industries including the manufacture and assembly of automobiles, aircraft, ships, trains and construction equipment.

Such industries place heavy importance on high quality products and the safety and security of the end-user. All power, battery, air and hand tools must also be checked accurately to ensure they deliver the correct level of torque, therefore the equipment used to validate and test them must also be regularly calibrated.

Crane Electronics provides expert technical advice, high-quality support and a dedicated service, repair and calibration facility for all of our innovative torque measurement products.

Our fully accredited calibration laboratory, based at our UK head office, provides UKAS and Crane accredited torque and angle calibration in addition to 'as new' service and repairs with all spare parts available when required.



Torque Calibration (0.1Nm up to 2,500Nm)

We offer a free initial assessment upon receiving your equipment. Once assessed, we then carry out a comprehensive calibration of your torque tools to ensure peak performance.

Our goal is to return your equipment in 'as new' condition - both electronically and mechanically. Where applicable, we also include free software upgrades to keep your tools fully up to date.

Choose the service that suits your needs:

Standard Crane Calibration – 10-Day turnaround
Express Crane Calibration – 5-Day turnaround (*must pre-book*)
UKAS-Accredited Calibration – Fully Certified, 10-Day Service

We can also service and calibrate higher torque equipment from 0.1Nm up to 28,000Nm - get in touch for more information.



Angle Calibration (Up to 1,400Nm)

We're proud to offer rotary torque transducer angle certification, made possible by our dedicated angle certification rigs within our state-of-the-art calibration laboratory.

We certify our CheckStar and CheckStar Multi torque transducers up to 1,400 Nm, with a fast, straightforward process, accurate to within 1% for each reading.

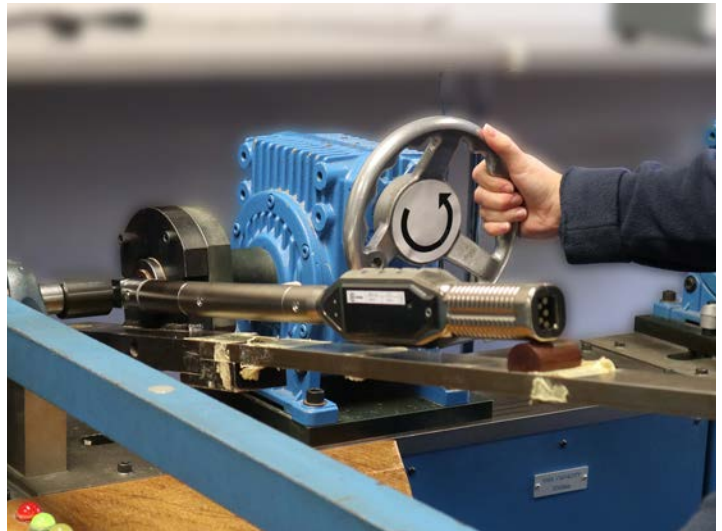


Service & Repair

If the unthinkable should happen and your Crane equipment needs repairs, you can return it directly to us for factory-authorised service and repair by the original manufacturer.

Once we receive your equipment, we complete a full evaluation of the product and provide a clear repair quote before any work begins.

We stock a full range of quality, genuine OEM spare parts, giving you peace of mind that your tools will be fully restored to deliver the same precision measurement and performance you expect.



Why choose Crane?

- Torque Calibration from 0.1Nm to 2,500Nm (Standard) or up to 28,000Nm (Higher Torque)
- Angle Certification for Rotary Torque Transducers
- Fully Accredited Service and Repair Facility
- ISO 17025 Accredited
- ISO 9001 and 14001 Registered
- UKAS-Accredited Calibrations & Laboratory
- High-Accuracy Standard Crane Calibrations also available



For more information about our Service and Calibration offering, contact us on;

☎ | +44 (0) 1455 25 14 88

🖱 | www.crane-electronics.com

@ | service@crane-electronics.com

Locations

Crane Electronics Ltd

Watling Drive,
Sketchley Meadows
Hinckley LE10 3EY
United Kingdom
Tel: +44 (0) 1455 25 14 88
sales@crane-electronics.com

Crane Electronics Inc

1260 11th Street West,
Milan, Illinois 61264
USA
Tel: +1 309-787-1263
salesusa@crane-electronics.com

Crane Electronics GmbH

Im Rank 5,
73655 Plüderhausen,
Germany
Tel: +49 (0)7181 9884-0
salesde@crane-electronics.com

Service & Calibration

Our accredited calibration centres provide dedicated torque calibration services for our entire range of torque tools, equipment and systems.
service@crane-electronics.com

Technical Support

Our dedicated technical support team is committed to providing exceptional assistance with any technical queries or issues you may encounter.
support@crane-electronics.com



www.crane-electronics.com

